



Clear Skies in May

Richie Jarvis

05-2011

Messier 53/NGC5053



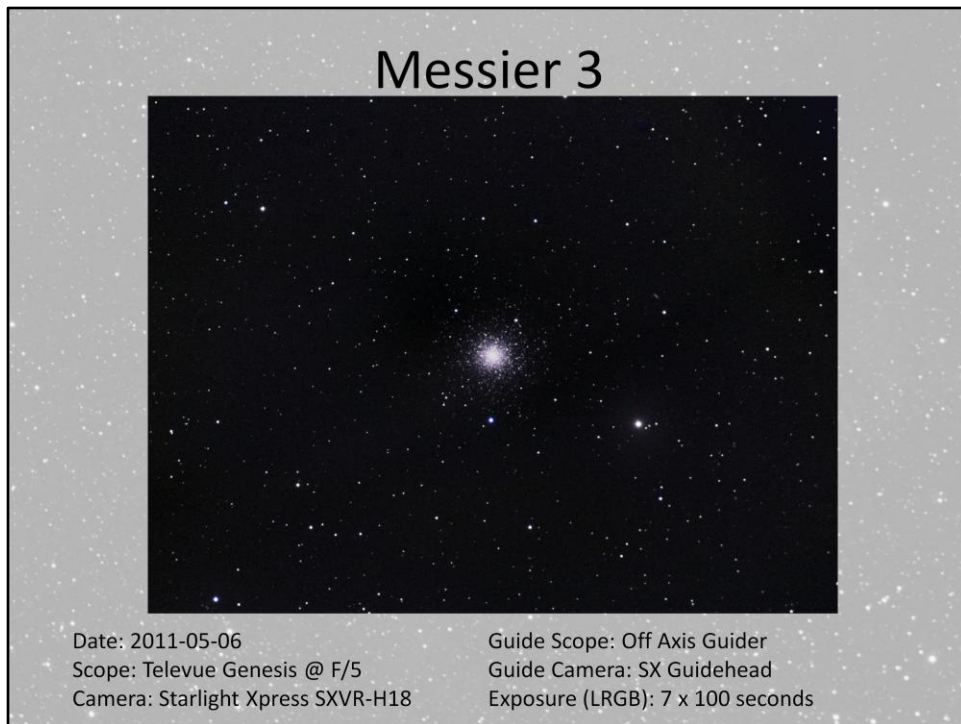
Date: 2011-05-03

Scope: Televue Genesis @ F/5

Camera: Starlight Xpress SXVR-H18 + OAG

Exposure (LRGB): 12 x 300

- Constellation: Coma Berenices
- Messier 53
 - Distance: 58,000 light years
 - Apparent Magnitude: 7.61
 - Dimensions: 13 arcminutes
 - Diameter: 210 light years
 - Other Designations: NGC 5024
 - Discovered on February 3, 1775 by Johann Elert Bode.
 - Independently rediscovered on February 26, 1777 by Charles Messier
- NGC5053
 - Distance: 53,500 light years
 - Apparent Magnitude: 9.47
 - Dimensions: 10.5 arcminutes
 - Diameter: 160 light years
 - Other Designations: H VI.7.
 - Discovered by William Herschel on March 14, 1784.



Constellation: Canes Venetici

Distance: 33,900 light years

Apparent Magnitude: 6.3

Actual Size: 90 light years

Visual Size: 18.6

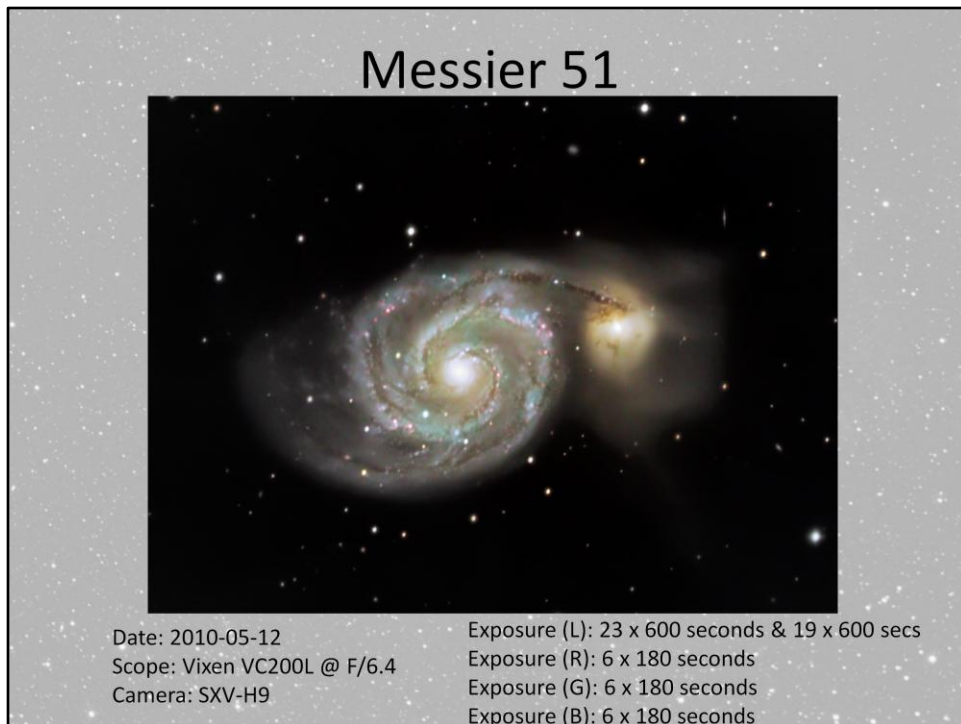
Other Designations: NGC 5272

•Discovered by Charles messier in 1764, and resolved as separate stars in 1787 by William Herschel.

•Lord Rosse noted several dark marks within 5' of center.

•Estimated to be 8 billion years old.

•Contains around 500,000 stars



Constellation: Canes Venatici

Distance: 23 Million light years

Apparent Magnitude: 8.4

Actual Size: ?

Visual Size: 11.2 x 6.9 arcminutes

Other Designations: NGC5194

- Interacting with NGC5195.
- Discovered in 1774 by Charles Messier.
- Its companion galaxy, NGC5195 was discovered in 1781 by Pierre Mechain.
- Lord Rosse used a 72 inch newtonian telescope to resolve it as a spiral galaxy in 1845.
- In 2005, supernova SN2005cs was observed, peaking at an apparent magnitude of 14.
- This galaxy is a very popular binocular target, and resolves well in small telescopes.

Messier 106



Date: 2011-04-27

Scope: Televue Genesis @ F/5

Camera: Starlight Xpress SXVR-H18

Guiding: Starlight Xpress Off Axis Guider

Guide Camera: SX Guidehead

Exposure (Clear): 9 x 300

Constellation: Canes Venatici

Distance: 23.7 Million light years

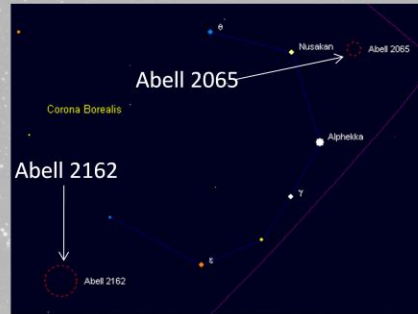
Apparent Magnitude: 9

Visual Size: 18.6 x 7.2 arcminutes

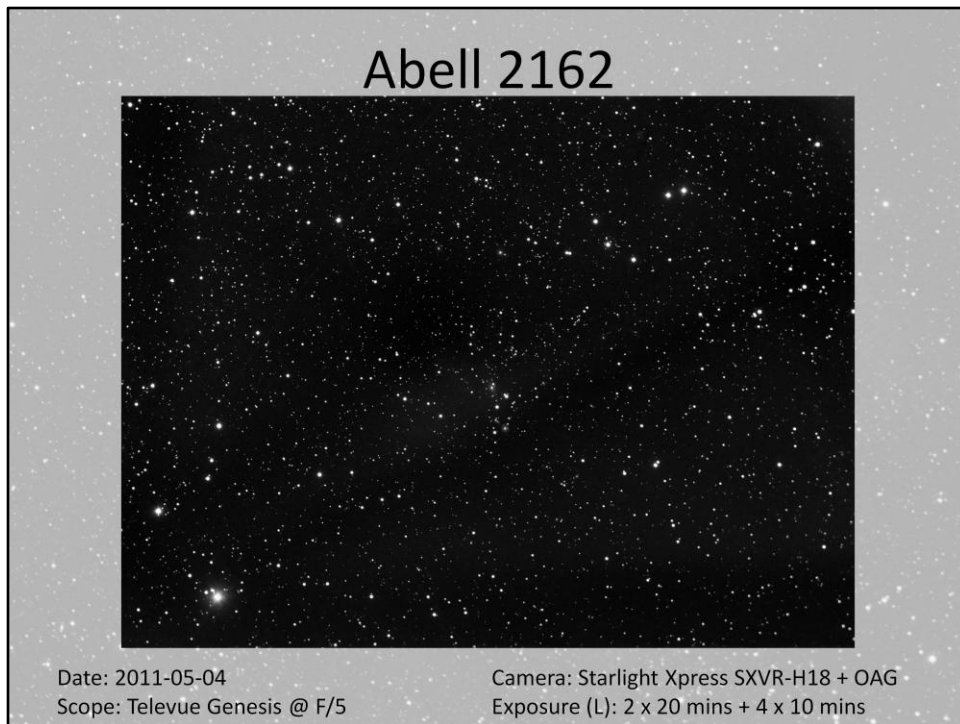
Other Designations: NGC4528

Deep Sky Challenge

- Abell 2065
 - Apparent Magnitude: 15.6
 - 22.4 x 22.4 arcminutes
 - Brightst 6 galaxies 15.5 mag
 - 40 in 1/2 deg field to 17 mag
 - 109 galaxies
- Abell 2162
 - Apparent Magnitude: 13.70
 - 56.0 x 56.0 arcminutes
 - Description:
 - 8 Gal/Deg
 - 37 galaxies



Anyone know
what this means???



(RA, Dec) center: (198.619551245, 17.9387517018) degrees

RA bounds: 197.785 to 199.452 degrees

Dec bounds: 17.2565 to 18.6197 degrees

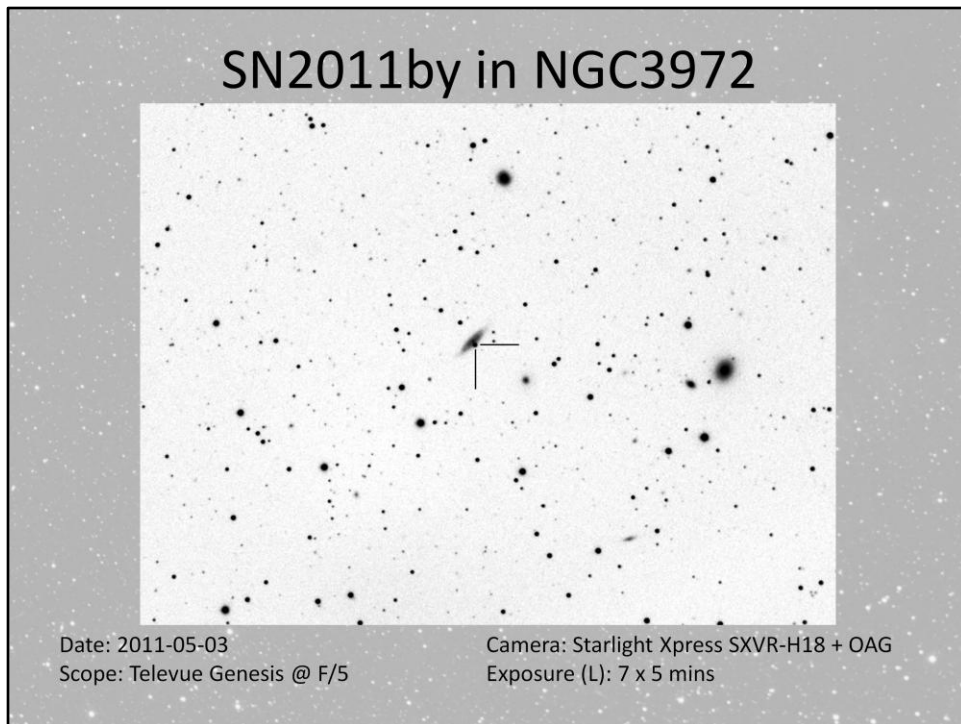
(RA, Dec) center (H:M:S, D:M:S): (13:14:28.692, +17:56:19.506)

Orientation: -16.98 deg E of N

Pixel scale: 2.22 arcsec/pixel

Parity: Reverse ("Left-handed")

Field size : 1.35 x 1.01 degrees



Easy to capture Supernova mag 14! Easy to see in large scopes too! SN2011by

Constellation: Ursa Major

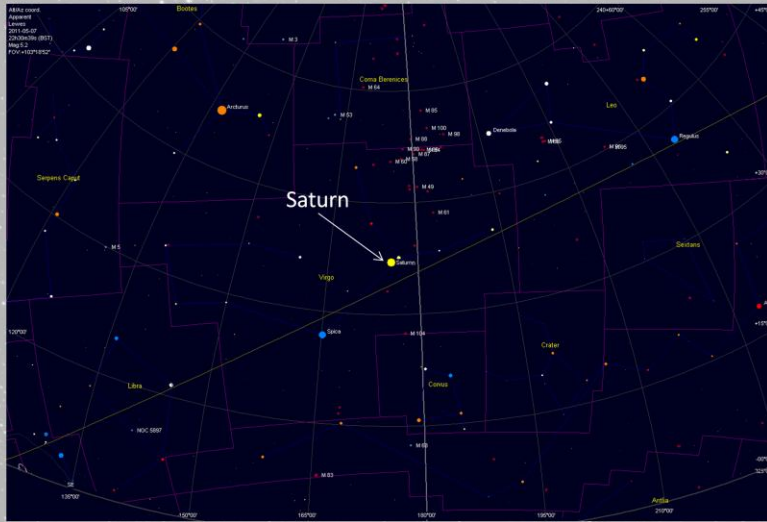
Distance: ? Million light years

Apparent Magnitude: ?

Visual Size: 3.4 x 0.77 arcminutes

Other Designations: n/a

Saturn – Good Height



19arc seconds
Altitude 37 degrees

Saturn



Date: 2009-03-22 and 2009-03-23

Camera: SXV-H9

Scope: Astro Professional 102ED @ F/4.62

Exposure (L): 9 x 600 + 6 x 1200 seconds

Join me for Under British Skies
15th May at 8pm GMT
(21:00 BST)

Listen live at <http://astronomy.fm>

Don't forget to visit my website
<http://nebul.ae>
for a downloadable version of this night
sky guide and more pictures!